



# “One Man’s Trash...”

Your guide to reducing, reusing and recycling

Southeastern Indiana Recycling District

Serving: Franklin, Jefferson, Jennings, Ohio,  
Ripley, Scott & Switzerland Counties



812-574-4080  
www.seird.org

Summer 2024  
Quarterly Newsletter

## SEIRD Making an Environmental Difference Scholarship Award Winners Announced

The Southeastern Indiana Recycling District has concluded another successful round of the Students Making an Environmental Difference Scholarship Program, aimed at recognizing graduating high school seniors within the District who have demonstrated dedication to environmental responsibility. This year, SEIRD is proud to announce the deserving winners of the scholarship: Josie Meyer from Batesville High School and Hunter Scudder from Milan High School.

Josie will be pursuing a major in Environmental/Civil Engineering at the University of Dayton, while Hunter Scudder plans to major in Architectural Engineering at the University of Cincinnati. Both Josie and Hunter are pursuing careers that will have a specific focus on improving and maintaining our environment. SEIRD is excited and pleased to support these two in their future efforts to make an environmental difference.



## Properly Dispose of Household Hazardous Waste

Household hazardous waste (HHW) is any product in your home that could be poisonous or dangerous if thrown in the trash. HHW includes car and lawn care products, paints and paint thinners, cleaning supplies, and more. Never toss HHW into the trash. HHW can endanger children or pets, result in spills in your neighborhood, or cause fires in collection trucks if it is placed into curbside carts.

### Mobile Household Hazardous Waste Collections in August

SEIRD accepts household hazardous waste (HHW) from residents throughout the counties of Franklin, Jefferson, Jennings, Ohio, Ripley, Scott, and Switzerland. Here are the upcoming dates for the mobile HHW collections in August:

#### Saturday, August 3

- Franklin County Recycle Center – 8 to 10 a.m.
- Ripley County Recycle Center – 11 a.m. to 1 p.m.

#### Saturday, August 10

- Jennings County Recycle Center – 8 to 10 a.m.
- Scott County Recycle Center – 11 a.m. to 1 p.m.

#### Saturday, August 17

- Switzerland County Recycle Center – 8 to 10 a.m.
- Ohio County Recycle Center – 11 a.m. to 1 p.m.

## How to properly dispose of your batteries

- Tape the terminal ends of your lithium-ion and other rechargeable batteries.
- Bag lithium-ion and other rechargeable batteries individually in sealable plastic bags.
- Do not place lithium-ion or other rechargeable batteries into your trash can or with recyclables! Take lithium-ion batteries or devices with these batteries to our Recycle Centers during regular drop-off hours.
- You can also drop off non-cracked car batteries



Credit: jrobalo | iStock | Getty Images Plus

with cells capped at the Recycle Centers.

In addition to lithium-ion batteries, we also accept lead acid, NiCD, NiMH, and NiZn batteries for recycling. Standard household alkaline batteries do not contain hazardous chemicals and can be disposed of in the trash. For added safety, please attach tape to both ends of alkaline batteries before disposal.

Some retail stores also accept batteries for recycling. For retail locations, visit [Call2Recycle.org](http://Call2Recycle.org).



## Shredding service available

Residents of our District can deliver sensitive documents for secure shredding to any of our Recycle Centers. There is a limit of three banker-sized (or similar) boxes per residence per visit. You do not need to remove staples, but please remove all metal tabs and metal reinforcements from hanging file folders, paper clips, clamp clips, etc.

When you deliver your documents to the Recycle Center, you will place them into a locked, tamper-proof container. When the container is full, it will be transferred to our facility in Madison where the contents will be shredded. If you are uncomfortable leaving your documents, you may call our office at 812-574-4080. We will be happy to make an appointment so you can deliver documents directly to the Jefferson County Recycle Center in Madison to personally watch them be shredded.

This is a program for residents and their personal, confidential papers only – please, no business documents!

# Donation Over Disposal

In a world where consumerism often reigns supreme, the question of what to do with our possessions when they're no longer of use frequently arises. The knee-jerk reaction for many is to simply toss them away, relegating them to the fate of a landfill. However, a more conscientious approach lies in donating these items.

By donating, we extend the lifespan of these items and lessen our impact on the planet.

Additionally, donating can benefit those in need. What might be clutter to us could be a valuable resource to someone else. Clothes, furniture, books, and other household items can find new life in the hands of those who can't afford to buy them brand-new. Donating allows us to contribute to our communities and support those who are less fortunate.

Fortunately, there are several ways to begin. One option is to donate to local charities or non-profit organizations. There are many thrift stores and donation centers where you can drop off your gently used items. These organizations often support various causes, such as homelessness, education, or healthcare, so you will often have items that are in need.

You may also donate locally at the SEIRD Re-Use Stores. Every county in



Credit: Damian Lugowski | iStock | Getty Images Plus

the District has a store that accepts used, but in good condition, items that will be made available to those who "shop" at our free stores. There is never a charge for any item; however, we do have guidelines and request that all shoppers observe them. More information regarding donations and shopping at the SEIRD Re-Use Stores may be found at [www.seird.org](http://www.seird.org).

Another possibility is to donate online. Several websites and apps facilitate the donation process by connecting donors with individuals or organizations in need. Whether it's clothing, electronics, or household goods, there's likely a platform where you can find someone who could benefit from your donations. You can also consider organizing a donation drive in your neighborhood or workplace. Encourage others to join you in decluttering their homes and donating items to those in need.



Credit: Santiago | iStock | Getty Images Plus

# Come shop at our Re-Use Stores

The SEIRD Reuse Centers play an important role in our community. By providing a hub where individuals and businesses can donate or pick up used items, the Reuse Center extends the life cycle of products that might otherwise end up in landfills. This not only helps conserve valuable resources but also reduces the energy and raw materials required to manufacture new products.

Everything at our Re-Use Stores is free. You won't find a better deal than that anywhere! All we ask is that you select items for your personal use and don't resell them. Clean, gently used merchandise in good condition can be dropped off and obtained during each center's normal business hours. Clothing, shoes, books, office supplies, videos/CDs, knick-knacks,

and non-upholstered furniture are just a few of the items that are accepted and available at SEIRD Reuse Centers.

Our Reuse Center hours and locations can be found at [www.seird.org](http://www.seird.org). On our website, click on your county for specific information and a downloadable brochure about the Recycle and Reuse Center nearest you.

The SEIRD Building Materials Reuse Center in East Enterprise can accept a variety of items, including fixtures, windows, doors, sinks, building supplies, and more. That center, located at 19 McCreary Ridge Road, East Enterprise, is open Monday and Wednesday, from noon until 6 p.m., and Saturday, from 8 a.m. until noon.

# 7 Tips for Greener Cleaning



Credit: Aygul Bulte | iStock | Getty Images Plus

- 1 Think mechanical first. A scrub brush, a dish scrubber, and a retired toothbrush can provide a lot of cleaning power with no chemicals at all. Use drain baskets to keep drains free of debris that can lead to clogs.
- 2 Use up chemicals that you have on hand before purchasing more. If you have cleaners stored in multiple locations (some in the laundry room, others under the kitchen sink, and a few in the garage), find them and inventory what you have available.
- 3 Consider creating your own cleaners from common household products, such as vinegar, baking soda, salt, lemon juice, and mineral oil. Many of these cleaners are easy to make, effective, and less expensive than pre-mixed chemical solutions. Recipes for homemade cleaning supplies abound on the internet; search online to find the ones that work best for you. (Remember that even homemade cleaners can be irritating to the skin and eyes. Always use caution in mixing, storing, and using homemade cleaners.)
- 4 If you choose to purchase a cleaning product, choose the mildest and most benign chemical product available. Don't use a sledgehammer when a fly swatter will do. Instead, try to select products that provide complete information on ingredients, offer the clearest instructions, and don't require special safety measures for use or disposal. To help you identify
- 5 these products, search the EPA's Safer Choice website at [www.epa.gov/saferchoice](http://www.epa.gov/saferchoice).
- 6 When you purchase products or containers, look for recycled-content and recyclable containers. Rather than using paper towels, choose reusable towels and old rags. If you purchase paper towels, opt for those made from recycled-content paper.
- 7 Buy concentrates to reduce packaging waste. Some cleaning products are now sold in concentrated form; you finish making the solution by adding tap water at home. Other products, such as laundry detergent, are concentrated and ready to use when you get home. Remember — if you have softened water, you can use even less detergent.
- 8 Keep cleaning products in their original, labeled containers and dispose of them properly. Never pour potentially harmful chemicals into food or beverage containers for storage. Store all cleaning products out of reach of children and away from pets. Do not store potentially hazardous materials close to sources of heat or in direct sunlight. Properly dispose of unneeded household hazardous waste at the SEIRD Recycle Center in the Jefferson Proving Grounds near Madison. This center accepts household hazardous waste year-round during regular operating hours.



**Contamination can begin at the recycling drop-off center. When materials that aren't accepted or acceptable materials that aren't prepared correctly are left behind, the problems begin. Our workers must clean up messes like this before they can even begin processing and preparing recyclable materials for market.**

## The Cost of Contamination

Contamination in recycling and trash might seem like a small issue, but its consequences reach far and wide, impacting our environment and efforts toward sustainability. When non-recyclable items end up in the recycling bin, they contaminate the entire batch of recyclables. This can render entire loads unsuitable for recycling, forcing them to be sent to landfills instead. Not only does this waste valuable resources, but it also undermines the efforts put into recycling and contributes to overflowing landfills.

Contamination poses risks to recycling facilities and workers. Hazardous materials, such as chemicals or sharp objects, can cause injuries or damage to equipment during the sorting process. These incidents not only endanger the safety of workers, but they also incur additional costs for repairs.

Our individual actions play an important role in preventing contamination. Taking the time to properly sort and clean recyclables before disposal can significantly reduce the risk of contamination. Additionally, being mindful of what goes into recycling bins and trash cans can help minimize contamination at the source. Visit [www.seird.org](http://www.seird.org) for more tips on how to avoid contamination.

## Total Garbage

*Total Garbage* by Edward Humes is an eye-opening examination of a pervasive problem that plagues modern society: waste. From overflowing landfills to the exploitation of natural resources, Humes paints a vivid picture of the destructive path we've paved in pursuit of convenience and excess.

One of the most poignant aspects of *Total Garbage* is Humes' exploration of the psychological and emotional toll of our disposable lifestyle. Through insightful analysis and poignant anecdotes, he delves into the sense of emptiness and disconnection that accompanies our relentless pursuit of the next new thing. By exposing the hidden costs of our disposable mindset, Humes challenges readers to confront the true value of their possessions and experiences.

Humes also offers a compelling vision for a more sustainable future, presenting actionable solutions and inspiring examples of individuals and communities striving to break free from the cycle of waste. From innovative recycling initiatives to grassroots movements advocating for change, *Total Garbage* serves as a beacon of hope in an otherwise bleak landscape.

While *Total Garbage* may be a sobering read, it is ultimately a testament to the power of awareness and collective action. By confronting the uncomfortable truths of our throwaway culture, Humes empowers readers to embrace a more conscientious way of living — one that prioritizes stewardship over squandering and connection over consumption.

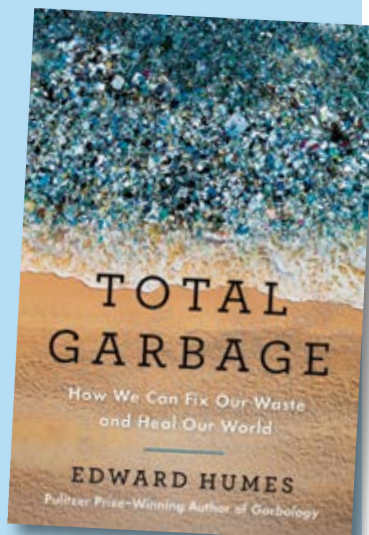


Photo by Michael Goulding, [www.edwardhumes.com](http://www.edwardhumes.com)

## Guidelines for Great Recycling

- **Know What's Recyclable** – You can recycle clean, dry paper, such as cardboard and other boxes, envelopes, junk mail, magazines, newspaper, office paper, school papers, paperback books, paper grocery bags, and wrapping paper with no metal. You can also recycle metal cans, glass bottles and jars, and plastic bottles and jugs. Some of our Recycle Centers also accept dairy and food tubs. Download the recycling brochure for your local Recycle Center at [www.seird.org](http://www.seird.org).
- **Label Bins Clearly** – Inside your home, label your recycling bins clearly to remind everyone what can and cannot be recycled. Simple, visible labels can make a big difference.
- **Empty, Clean, and Dry** – Empty bottles and other containers, remove excess residue, rinse them out, and allow them to air-dry.
- **Save Space in the Bin** – Break down and flatten boxes before recycling. If needed, cut cardboard into pieces no larger than about 18 by 18 inches.
- **Keep It Loose** – Don't bag your recycling. Recyclables should be loose as they go into the bin.
- **Avoid Hazardous Materials** – Never mix tangles, like hoses or cords, or hazardous waste, such as batteries, chemicals, or medical sharps, with your recycling. These items can endanger workers and damage equipment.
- **Steer Clear of Contaminants** – Keep "yucky" items out of the recycling! This includes dirty recyclables, greasy pizza boxes, and, especially, diapers.
- **Learn More** – For more tips about recycling, visit [www.seird.org](http://www.seird.org).



Credit: Drazan Zigic | iStock | Getty Images Plus

## Back-to-School Savings

As the back-to-school season approaches, it's time to gear up for another academic year. However, this doesn't mean you'll have to break the bank. With proper planning and smart choices, you can navigate back-to-school shopping while saving money and reducing waste.

- Take inventory of what you already have. Many items, like backpacks, binders, and calculators, can be reused from previous years, saving you money and reducing unnecessary purchases.
- Shop secondhand. Thrift stores and online marketplaces are treasure troves for affordable and gently used school supplies. From clothing to textbooks, buying secondhand not only saves money, but it also reduces the demand for new production.
- Invest in durable, high-quality items that will last longer. While they may have a higher upfront cost, they will save you money in the long run by eliminating the need for frequent replacements. Look for products

made from sustainable materials, like recycled paper.

- Take advantage of sales and discounts by planning your shopping in advance. Start looking for deals early and consider bulk-buying essentials like pencils and notebooks to save both money and packaging waste.
- Try DIY. Get creative and make your own school supplies whenever possible. From decorating plain notebooks to sewing your own pencil case, DIY projects are not only fun, but they are also eco-friendly and budget-friendly.
- Pack a waste-free lunch. Invest in reusable containers, water bottles, and utensils to pack your lunch in. Not only does this reduce single-use plastic waste, but it also saves money compared to buying pre-packaged meals every day.
- Be a mindful consumer. Before making a purchase, consider if you really need it.

# SEIRD Recycle and Reuse Centers

## Batesville Area Recycle Center

616 John Street, Batesville  
 Phone: 812-801-9099  
 Hours: Mon., Wed., Fri., 1–6 p.m.;  
 Sat., 8 a.m.–noon

## Franklin County Recycle and Reuse Center

9076 Landfill Road, Metamora (located off of U.S. Highway 52, west of Brookville)  
 Phone: 513-239-0310  
 Recycle Center Hours: Mon.–Sat., 8:30 a.m.–3 p.m.  
 Reuse Center Hours: Tues. and Thurs., 9 a.m.–3 p.m.

## Jefferson County Recycle Center

6556 N. Shun Pike Road, Building #534, Madison (inside Jefferson Proving Ground)  
 Phone: 812-574-4080  
 Hours: Mon.–Fri., 7 a.m.–3 p.m.\*; 2nd and 4th Sat., 8 a.m.–noon  
 \*The center stays open until 7 p.m. on the 1st and 3rd Tuesdays of each month.

## Jefferson County Reuse Center

6511 N. Meridian Road (inside Jefferson Proving Ground), Madison  
 Phone: 812-801-7012  
 Hours: Tues. and Thurs., noon–5 p.m.;  
 Sat., 8 a.m.–noon

## Jennings County Recycle and Reuse Center

4800 State Road 3, North Vernon (behind county garage)  
 Phone: 812-352-0800  
 Recycle Center Hours: Mon., Wed., Thurs., Fri., 8 a.m.–6 p.m.; Sat., 8 a.m.–4 p.m.  
 Reuse Center Hours: Wed. and Fri., 1–6 p.m.; Sat., 11 a.m.–3 p.m.

## Ohio County Recycle and Reuse Center

1432 Barbour Way, Rising Sun  
 Phone: 812-801-9037  
 Hours: Mon., Wed., Fri., 1–6 p.m.;  
 Sat., 8 a.m.–noon



## Ripley County Recycle and Reuse Center

2710 N. Hasmer Hill Road, Osgood  
 Phone: 812-609-4371  
 Recycle Center Hours: Mon., 8 a.m.–3 p.m.; Tues. and Thurs., noon–6 p.m.; Fri., 8 a.m.–3 p.m.; Sat., 8 a.m.–noon (closed Wed. and Sun.)  
 Reuse Center Hours: Tues. and Thurs., noon–6 p.m.; Sat., 8 a.m.–noon

## Scott County Recycle and Reuse Center

4689 Double or Nothing Road, Underwood  
 Phone: 812-752-8474  
 Recycle Center Hours: Tues., Thurs., and Sat., 8 a.m.–4:15 p.m.  
 Reuse Center Hours: Tues. and Thurs., 9 a.m.–3 p.m.; Sat., 8 a.m.–noon

## Switzerland County Recycle, Building Materials Reuse Center and Reuse Store

19 McCreary Ridge Road, East Enterprise  
 Phone: 812-599-3751  
 Recycle and Building Materials Reuse Center Hours: Mon. and Wed., noon–6 p.m.; Sat., 8 a.m.–noon  
 Reuse Store Hours: Mon. and Wed., noon–6 p.m.; Sat., 8 a.m.–noon

[www.seird.org](http://www.seird.org)

## What do I do with latex paint?

NO LATEX PAINTS will be accepted for disposal at mobile events or at the SEIRD facility in Madison. Latex paint is not considered hazardous waste. If you have a small amount of paint or it is unusable, allow the paint to dry out by leaving the lid off of the can or by adding kitty litter or sand to harden it. Then dispose of the dried-out paint can, with the lid off, in your regular trash. Please drop off usable quality and amounts of LATEX paint at our Building Materials Reuse Center located at the Switzerland County Recycle Center in East Enterprise. See the box above or visit us at [www.seird.org](http://www.seird.org) for hours and location.



## Report Illegal Dumping

Discarding trash or other unwanted items in empty lots, along highways, or in other non-approved locations is considered illegal dumping, and it is against the law. Dumped items frequently include furniture, appliances, tires, construction waste, household trash, and hazardous materials. Oftentimes these illegally dumped items attract curious children — posing significant health and safety risks. Dirty diapers and food trash attract rodents, insects, and other vermin. Dumping items pollutes the soil and water and destroys Indiana's natural beauty. Please be sure to landfill or recycle items you no longer want or need.

To report illegal dumping, please contact the Indiana Department of Environmental Management (IDEM) online at [www.in.gov/idem/5274.htm](http://www.in.gov/idem/5274.htm) or call 800-451-6027 and select option 3. All reports are confidential. Keep our environment clean, safe, and healthy — now and for generations to come.

The Southeastern Indiana Recycling District (SEIRD) offers residents recycling, reuse, and household hazardous waste disposal options in Franklin, Jefferson, Jennings, Ohio, Ripley, Scott, and Switzerland counties. Please visit our website at [www.seird.org](http://www.seird.org) to learn more about our services. As we are a public recycling district, we do not pay for scrap metal or any other items.



## Free event recycling bins available

Summers are made for fun in the sun with friends and family. Would you like to offer recycling at your next get-together? We have a limited number of white corrugated cardboard boxes that we are happy to loan out at no charge to individuals wanting to recycle at large family gatherings and to communities for their events. Call us today to see if we can meet the recycling needs of your event.

After the event, recyclables and the recycling boxes should be dropped off at one of our Recycle Centers. Boxes are to be returned in good condition within three days after the event. Recycle Centers accept EMPTY aluminum cans and #1 and #2 plastic bottle- and jug-shaped containers. Recyclables contaminated with either food or trash cannot be accepted.

For more information or to request bins for your event, contact the SEIRD office at 812-574-4080.

*We want your suggestions, questions, and comments!*

### Southeastern Indiana Recycling District

Jefferson Proving Ground  
 Building #534  
 6556 N. Shun Pike Road  
 Madison, IN 47250  
 812-574-4080

[seirdinfo@gmail.com](mailto:seirdinfo@gmail.com) • [www.seird.org](http://www.seird.org)



### Southeastern Indiana Recycling District

©2024 SEIRD and Eco Partners, Inc.  
 All rights reserved.



Please recycle after reading.